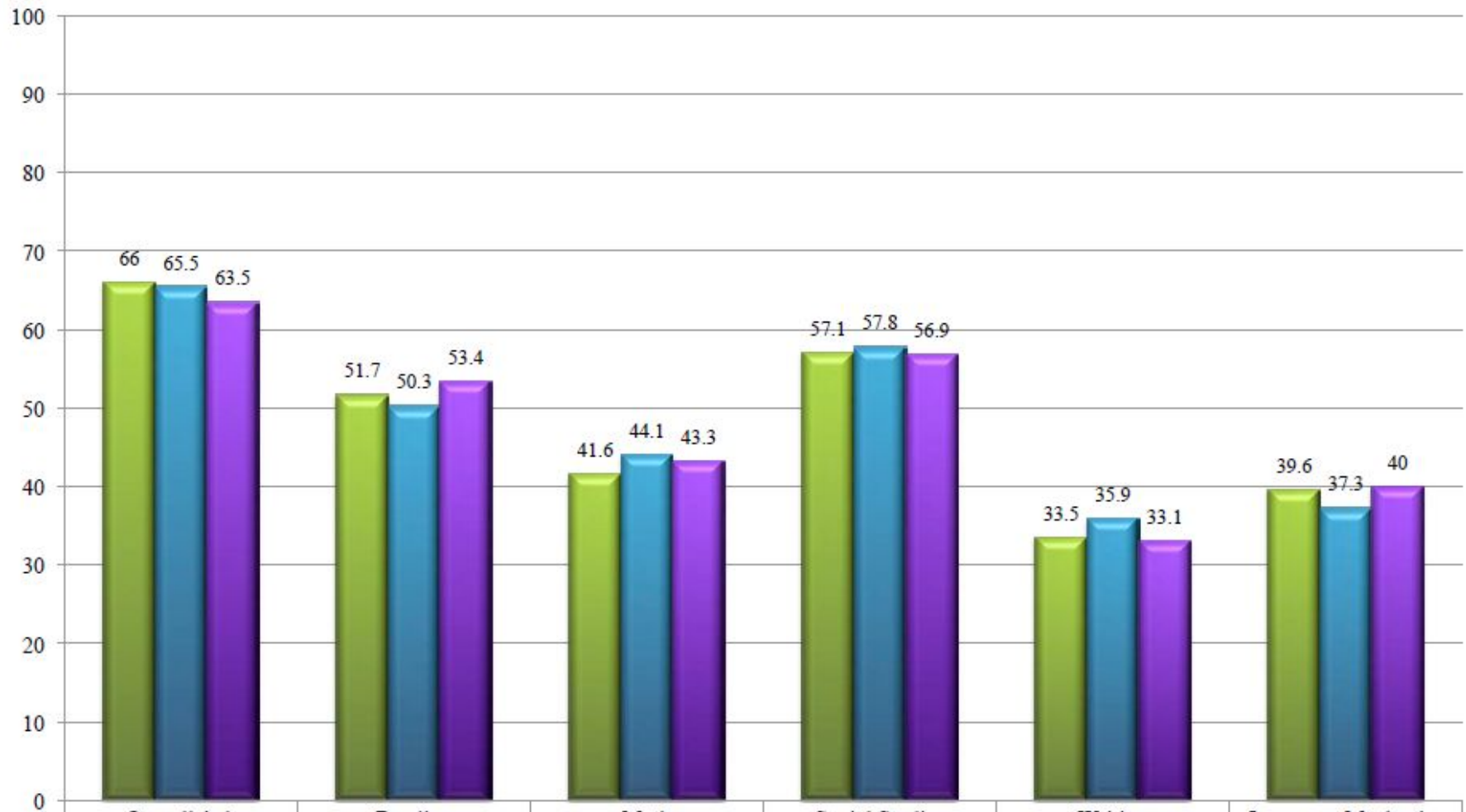


Butler County Middle School
2017
K-Prep Data Analysis



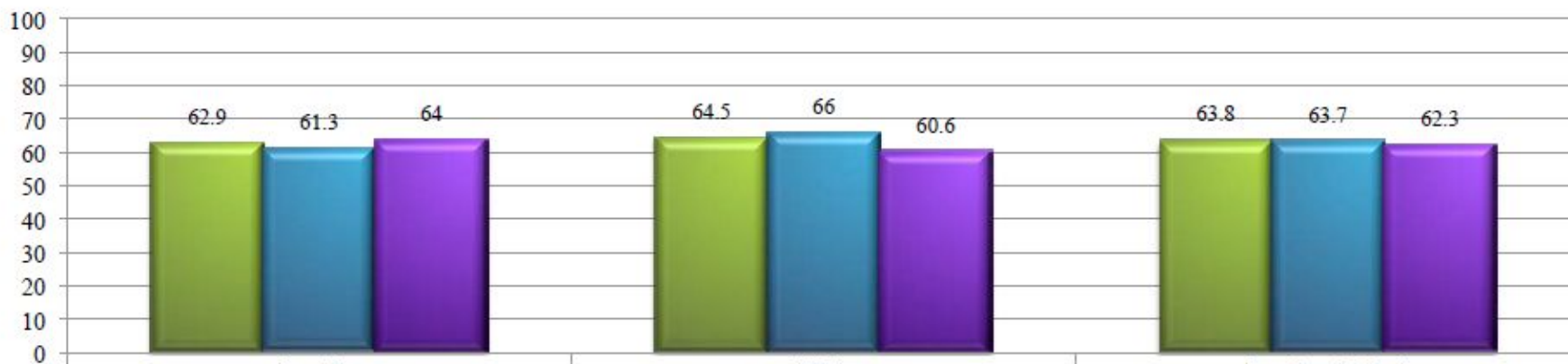
Achievement



	Overall Ach	Reading	Math	Social Studies	Writing	Language Mechanics
2015	66	51.7	41.6	57.1	33.5	39.6
2016	65.5	50.3	44.1	57.8	35.9	37.3
2017	63.5	53.4	43.3	56.9	33.1	40
2017 State	68.4	56.9	47	60.5	37.2	48
2017 District	63.5	0	42	0	0	40

Overall Ach includes bonus points; Subject Scores are % proficient and distinguished

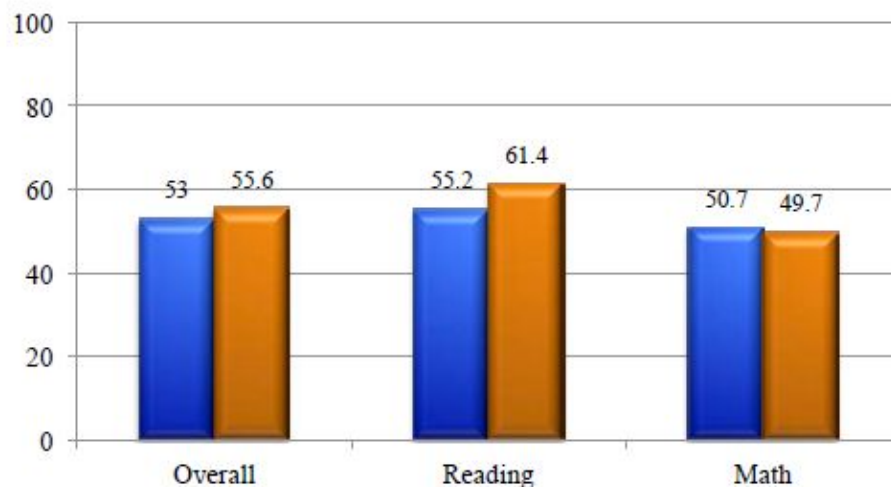
Student Growth %ile



	Reading	Math	Reading & Math
2015	62.9	64.5	63.8
2016	61.3	66	63.7
2017	64	60.6	62.3
2017 State	60	59.9	60
2017 District	64	60.6	62.3

Categorical Growth

■ 2016 ■ 2017



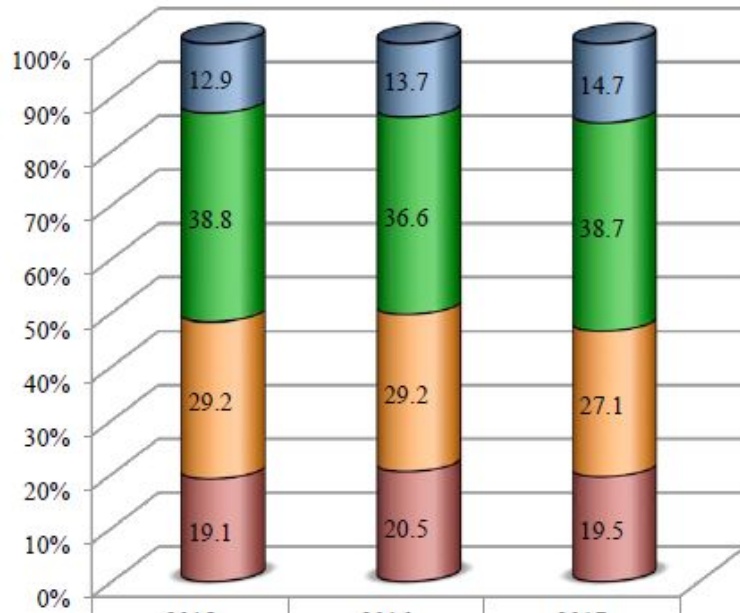
Overall Growth Score



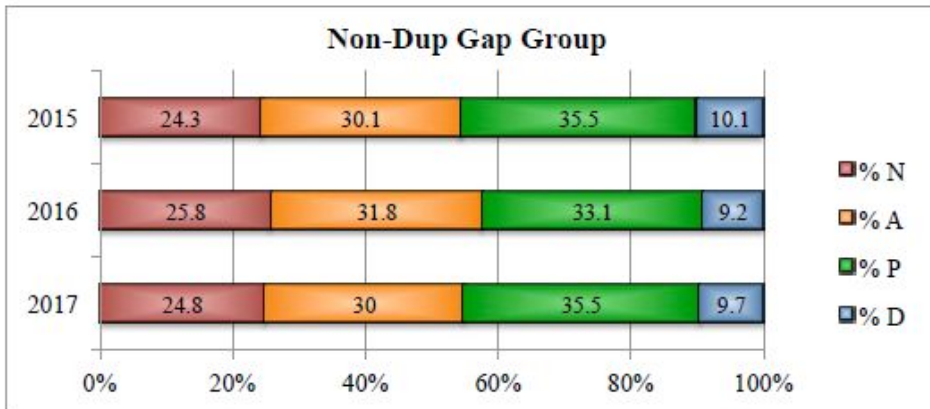
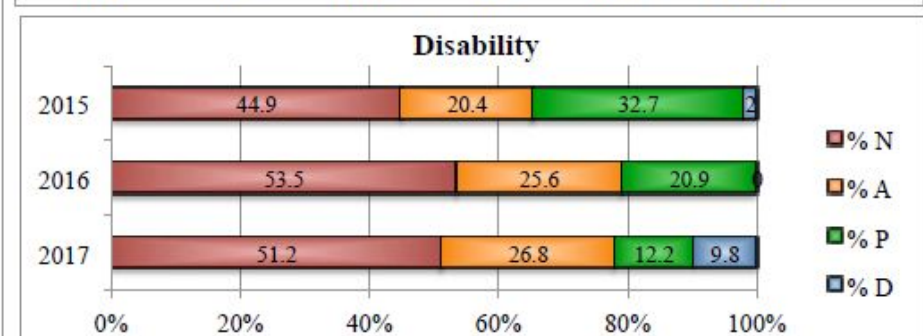
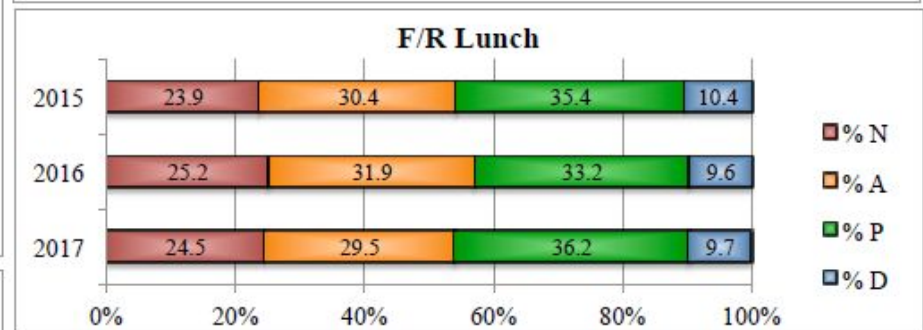
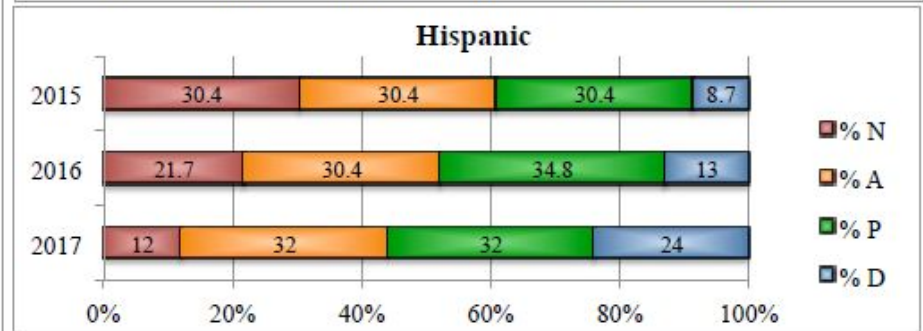
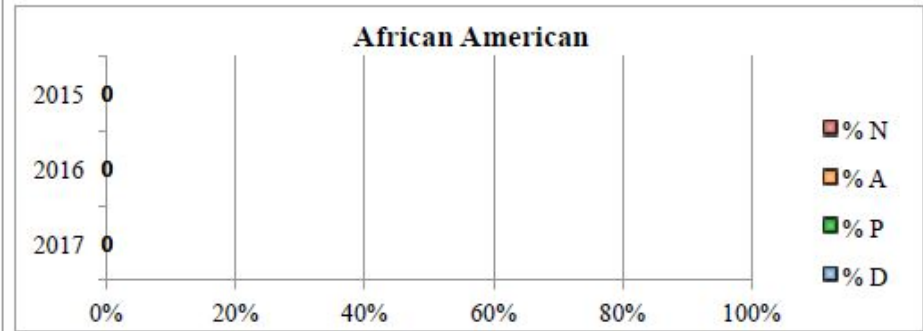
Performance Level % - Reading



Reading - All Students



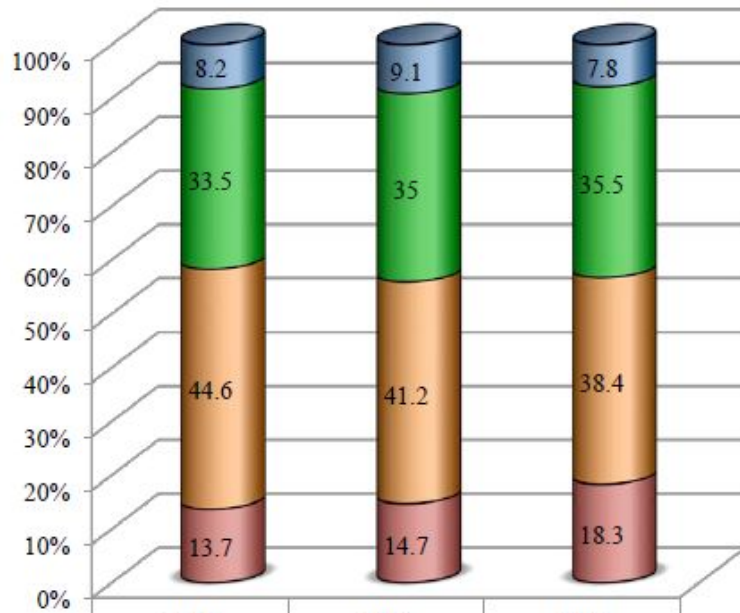
	2015	2016	2017
Distinguished	12.9	13.7	14.7
Proficient	38.8	36.6	38.7
Apprentice	29.2	29.2	27.1
Novice	19.1	20.5	19.5



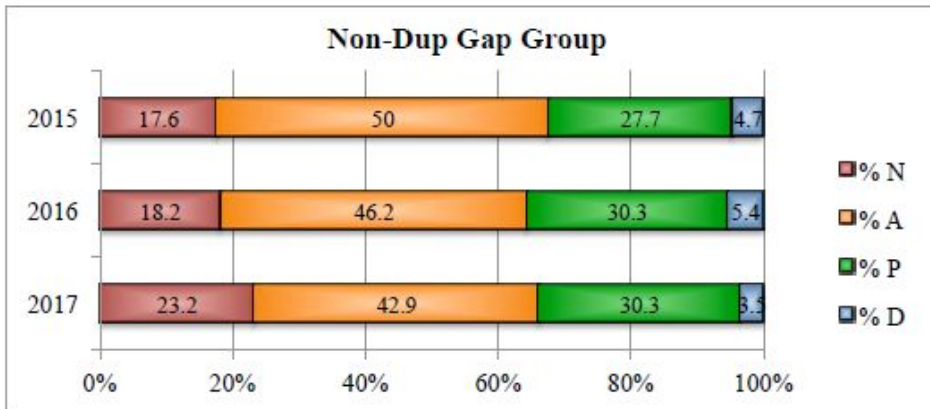
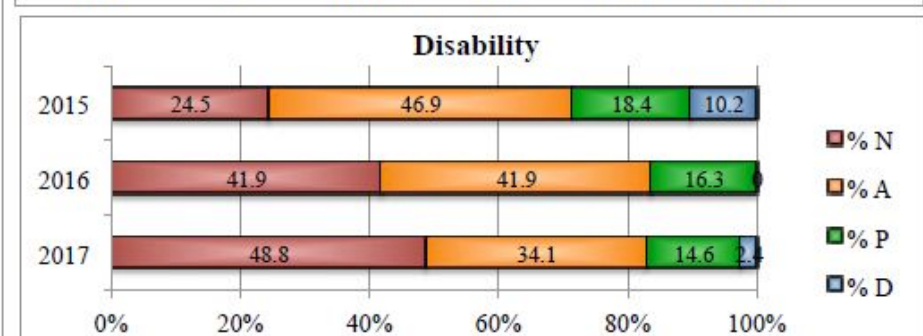
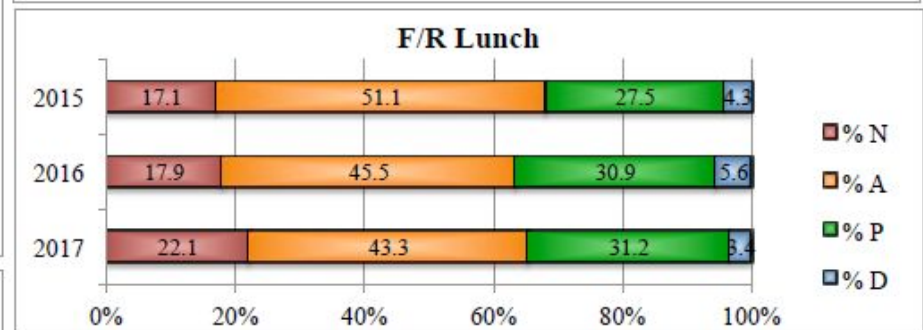
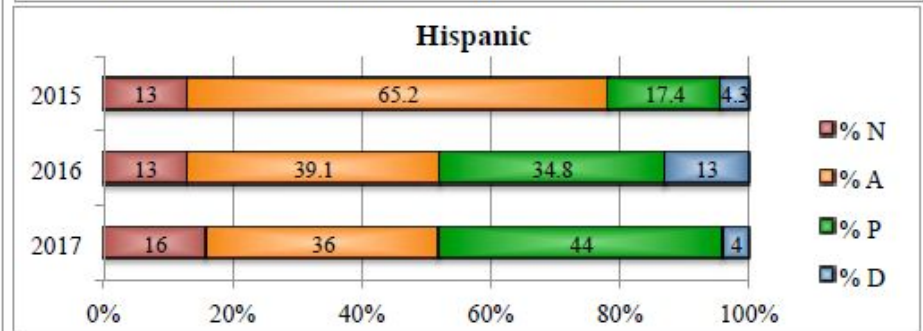
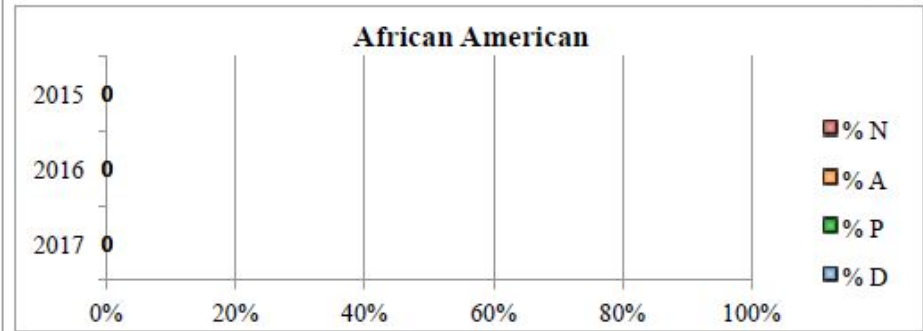
Performance Level % - Math



Math - All Students



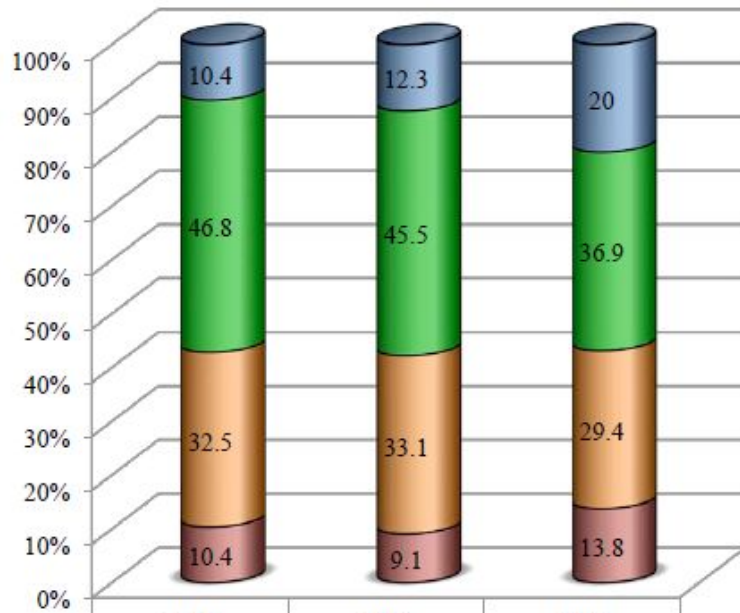
	2015	2016	2017
Distinguished	8.2	9.1	7.8
Proficient	33.5	35	35.5
Apprentice	44.6	41.2	38.4
Novice	13.7	14.7	18.3



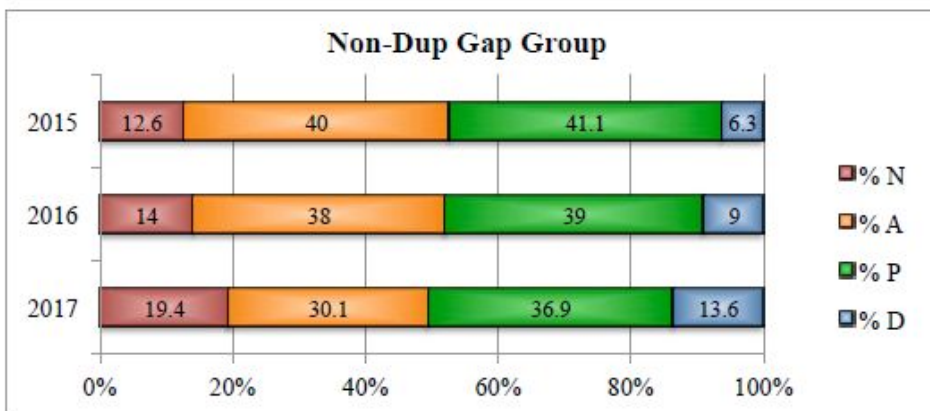
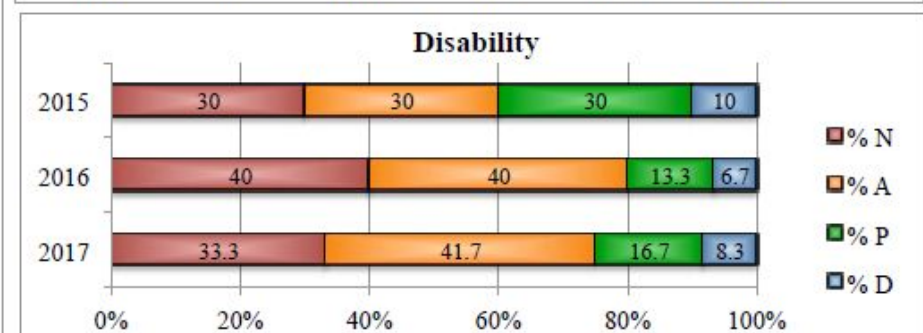
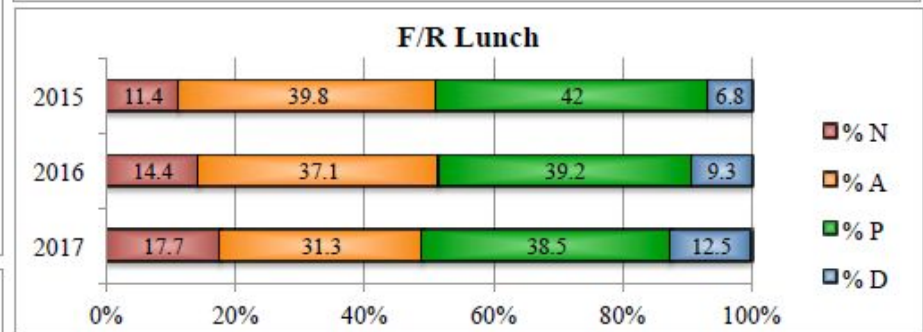
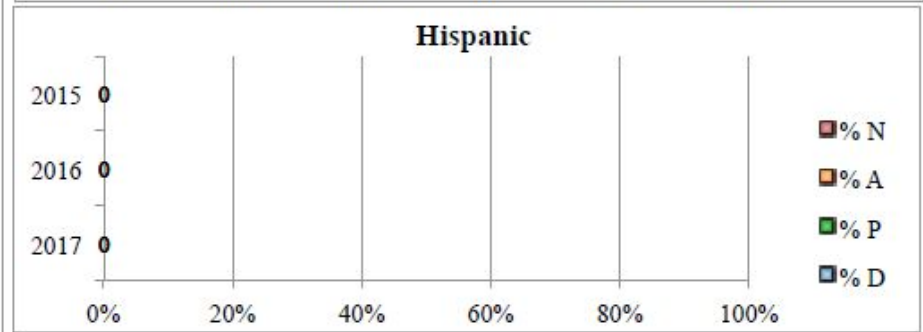
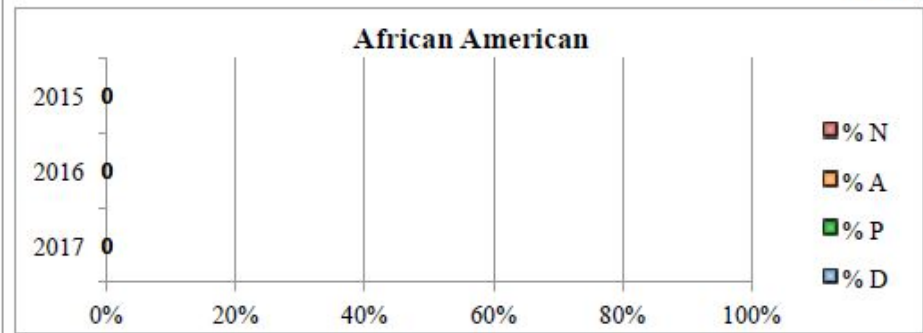
Performance Level % - Social Studies



Social Studies - All Students



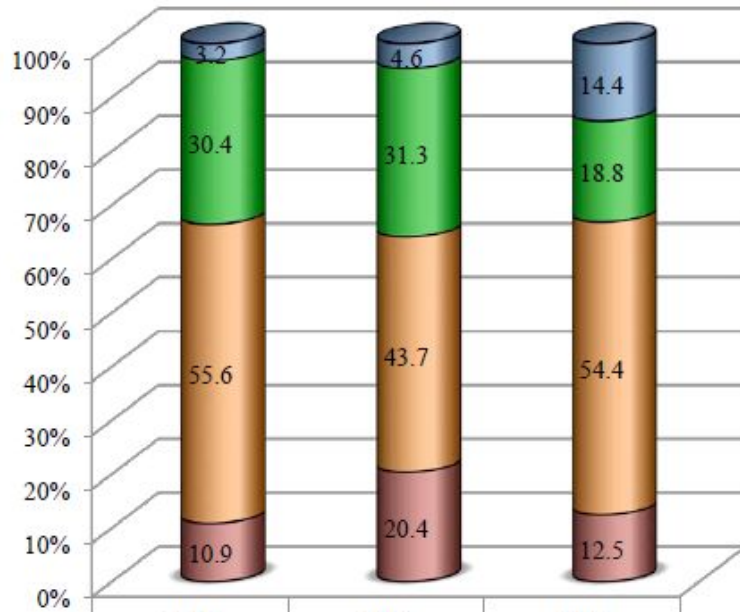
	2015	2016	2017
Distinguished	10.4	12.3	20
Proficient	46.8	45.5	36.9
Apprentice	32.5	33.1	29.4
Novice	10.4	9.1	13.8



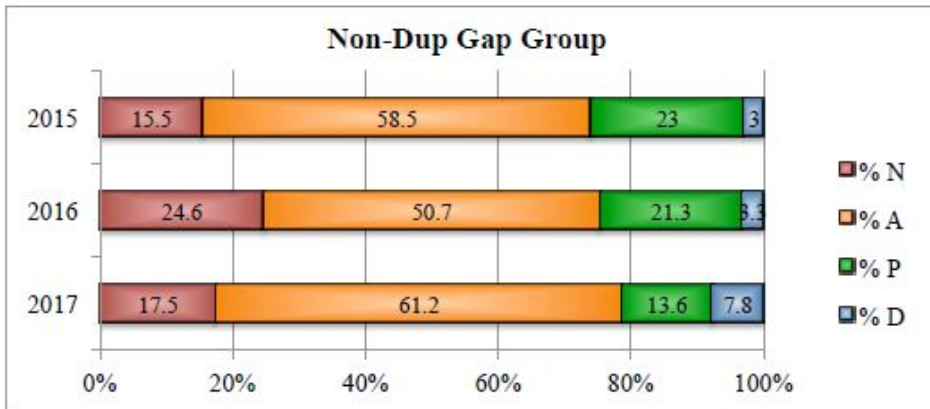
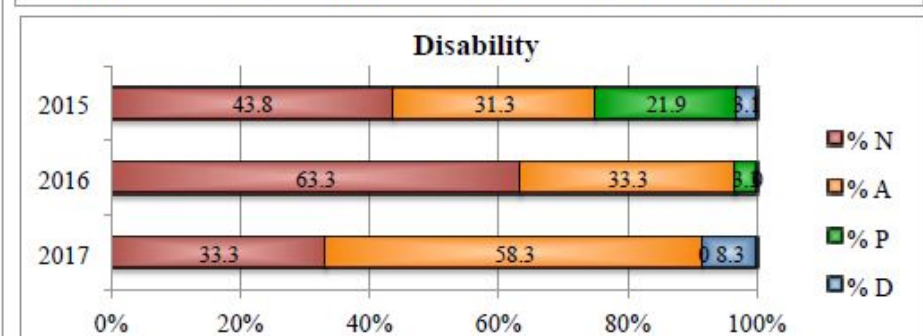
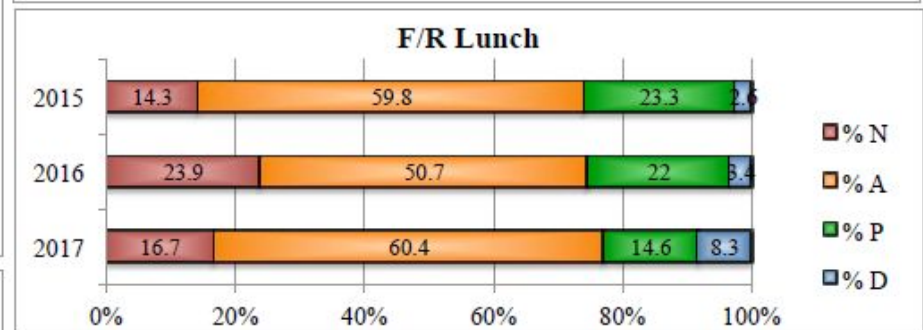
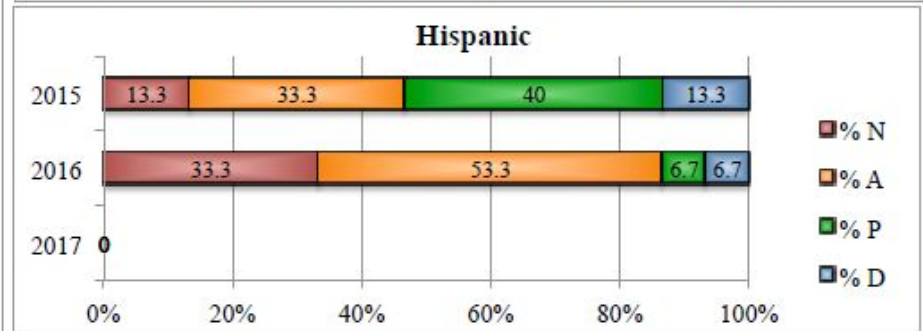
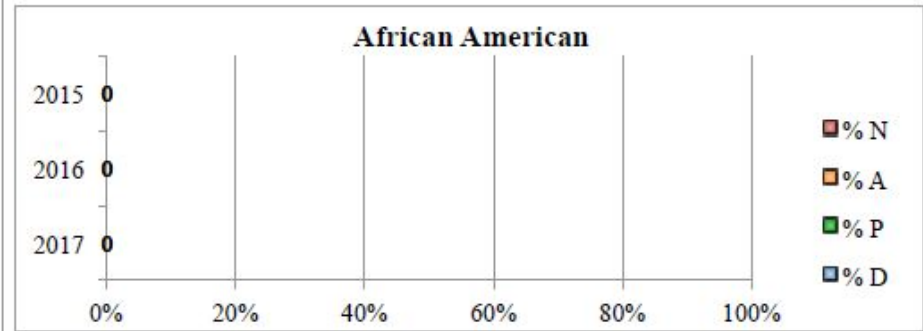
Performance Level % - Writing



Writing - All Students



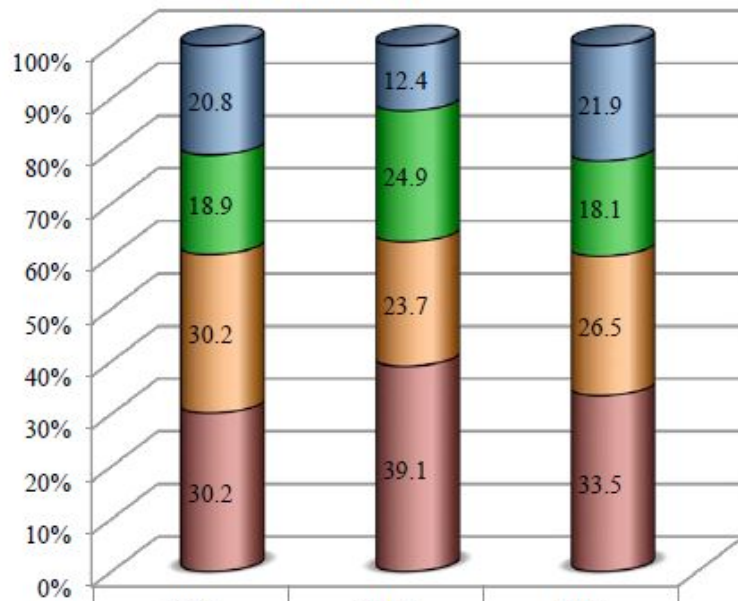
	2015	2016	2017
Distinguished	3.2	4.6	14.4
Proficient	30.4	31.3	18.8
Apprentice	55.6	43.7	54.4
Novice	10.9	20.4	12.5



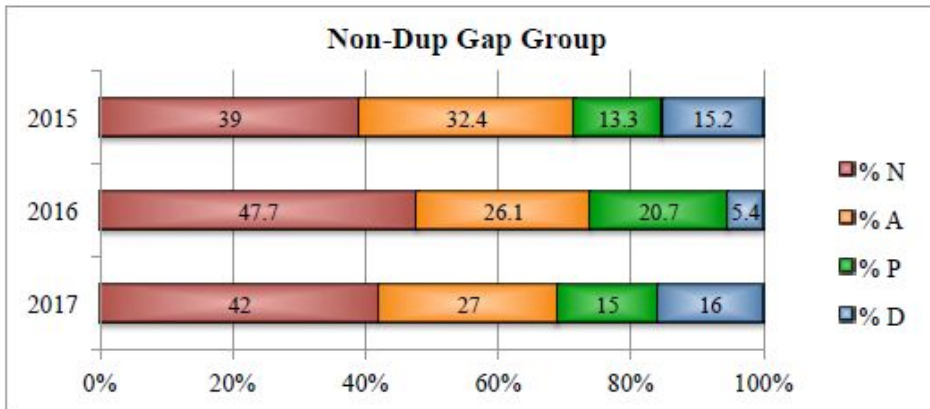
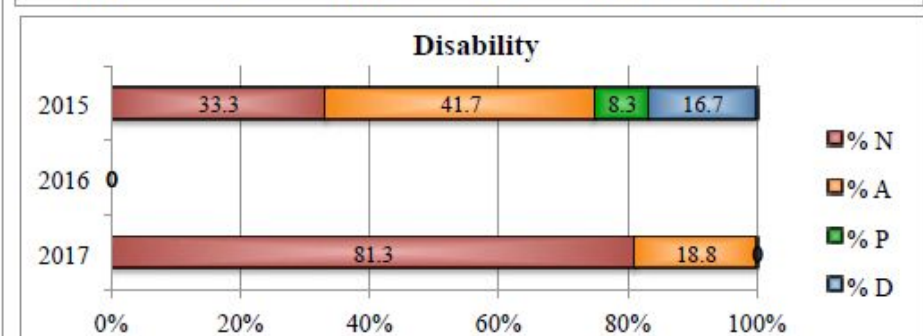
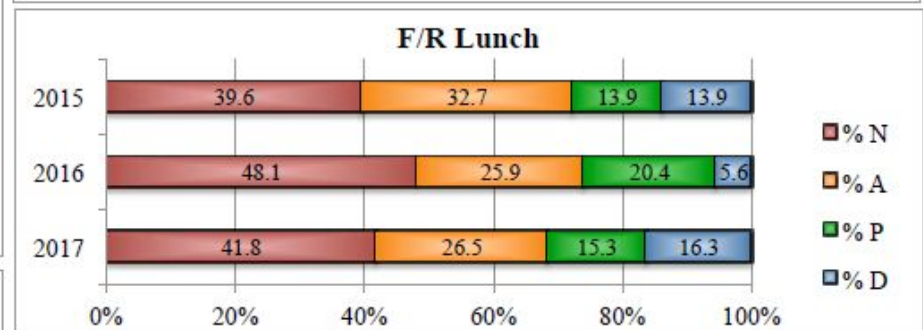
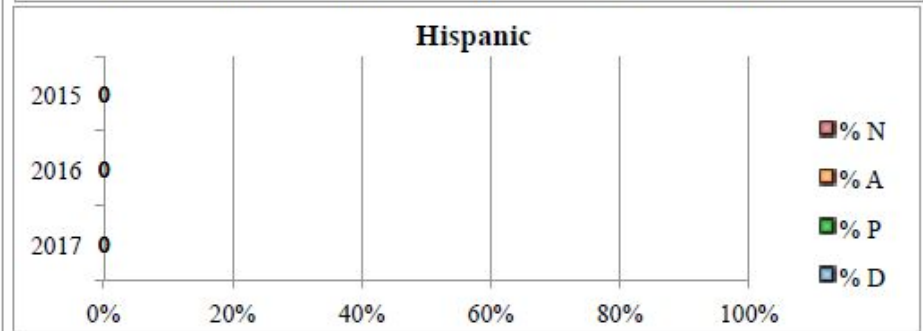
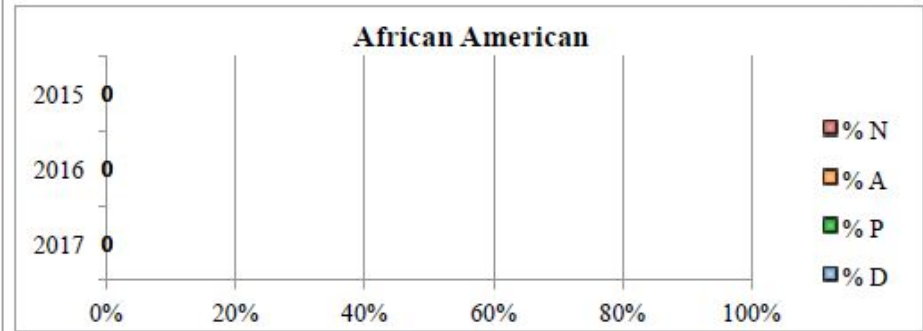
Performance Level % - Language Mechanics



Language Mechanics - All Students

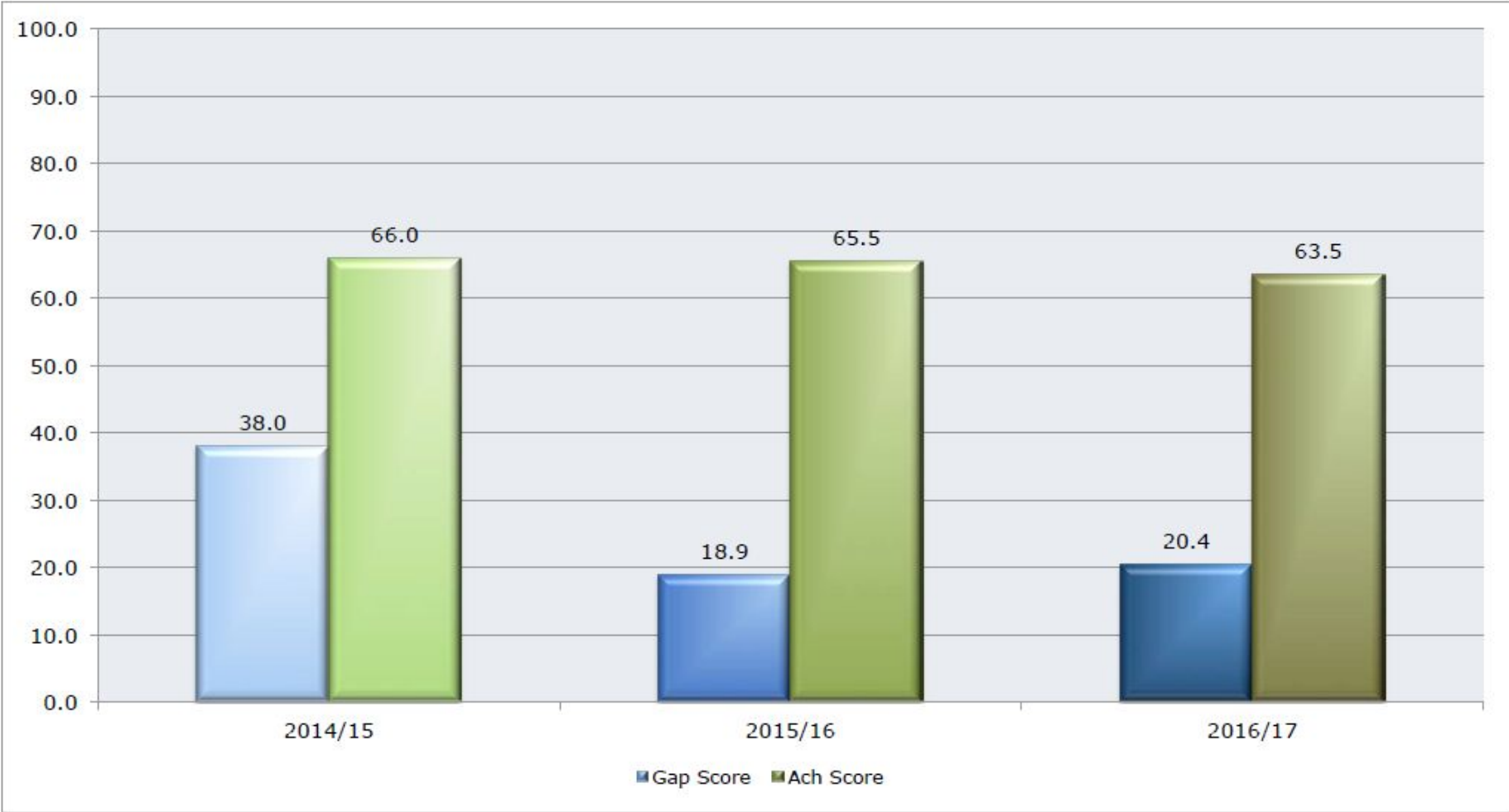


	2015	2016	2017
Distinguished	20.8	12.4	21.9
Proficient	18.9	24.9	18.1
Apprentice	30.2	23.7	26.5
Novice	30.2	39.1	33.5



2016/17 Gap Analysis

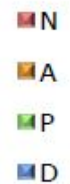
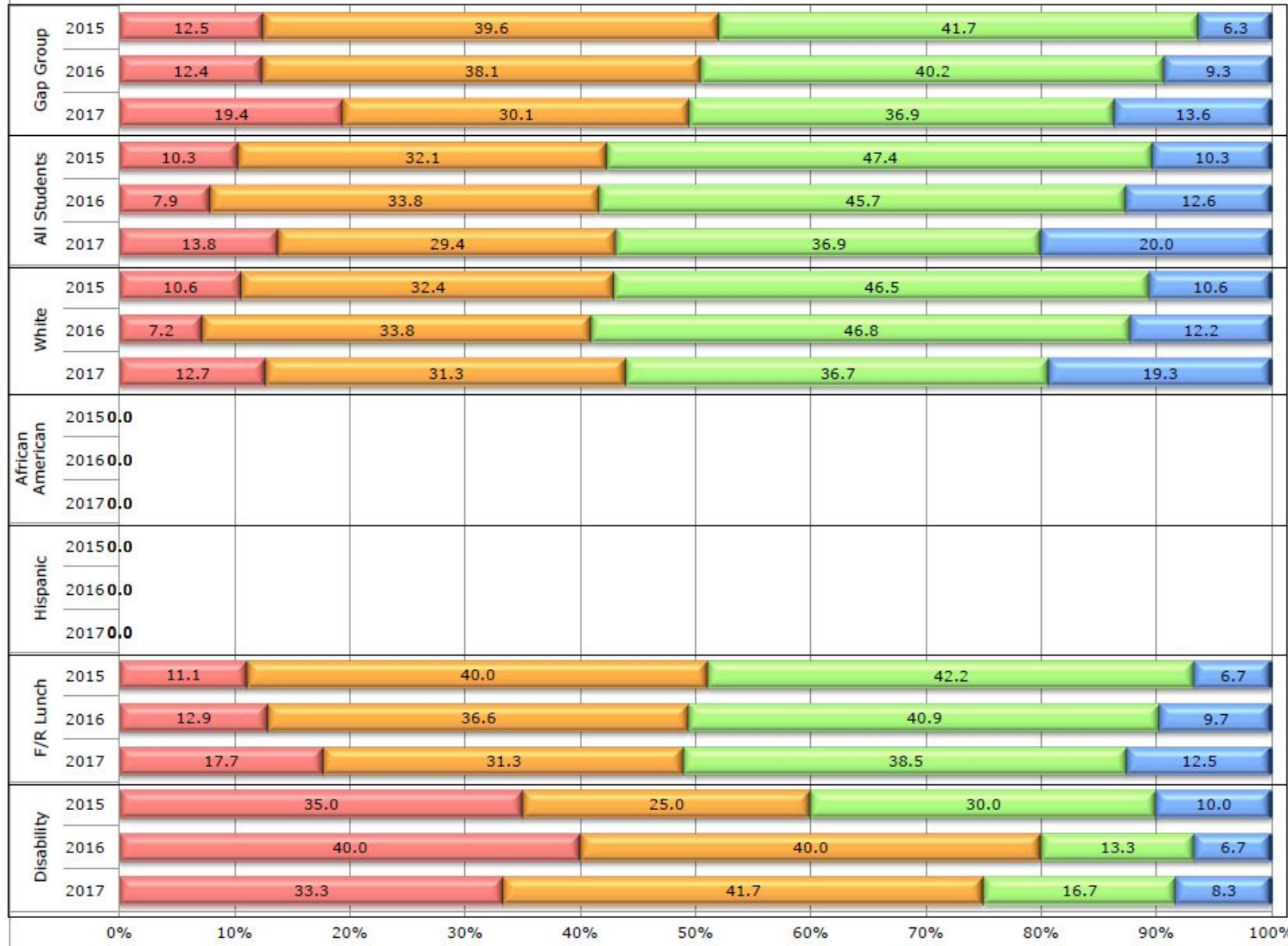
2017 Overall Gap Score:	20.4
--------------------------------	-------------



Reading NAPD Percentages



Social Studies



Writing NAPD Percentages

Writing



■ N
■ A
■ P
■ D

Math and Reading Novice %

Reading	% Novice
2013	20.4
2014	18.8
2015	19.2
2016	20.5
2017	19.5
Math	% Novice
2013	18.2
2014	22
2015	13.7
2016	14.7
2017	18.3

Spring 2017 Map Scores vs K-Prep Scores

	Novice %	Apprentice %	Proficient %	Distinguish %
Reading (Map)	29.0	25.2	34.7	11.1
Reading (K-Prep)	19.5	27.1	38.7	14.7
Math (Map)	17.4	42.4	33.4	6.7
Math (K-Prep)	18.3	38.4	35.5	7.8

BCMS Next Steps

Action(s)

- PBIS goals and incentives for academic behaviors
- Accountability Grades: Effort, Prewriting/Strategies, and Behaviors during assessments
- Mentor Groups: Gap Students/Novice Reduction
- Peer Tutoring: At Risk students
- Google Classroom
- Map Score Incentives:
- K-Prep Like Assessments