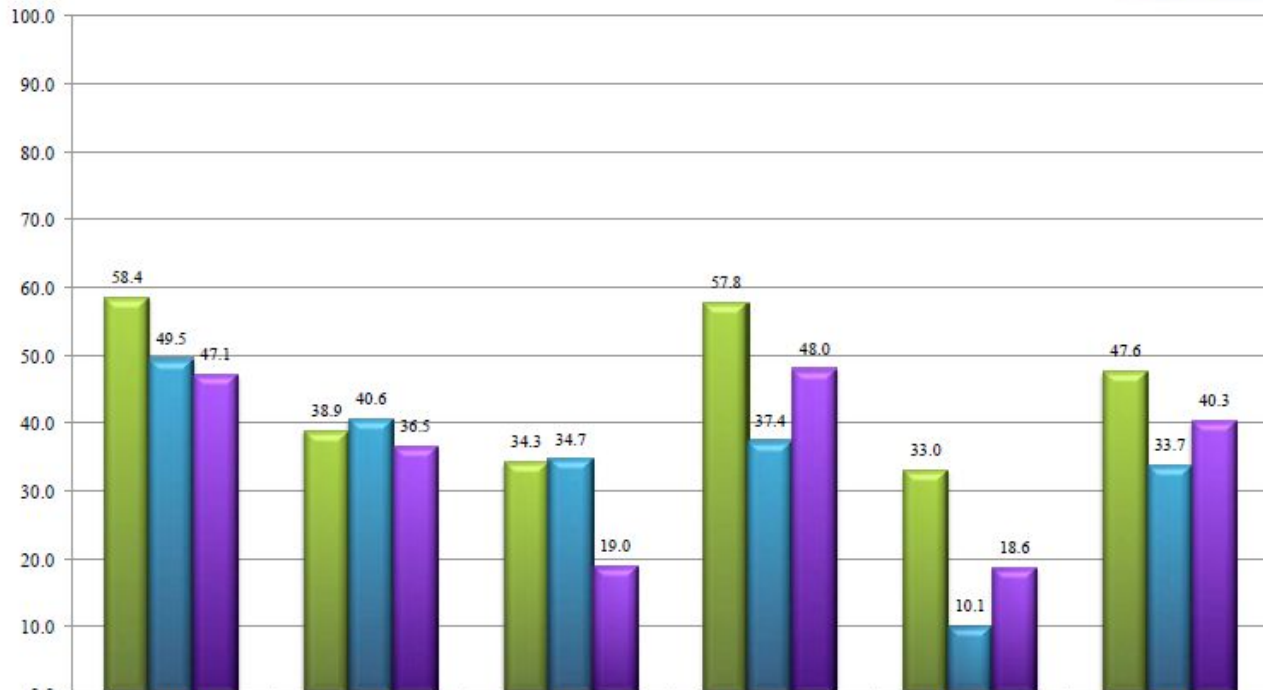
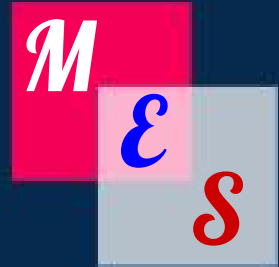


# Morgantown

# Elementary

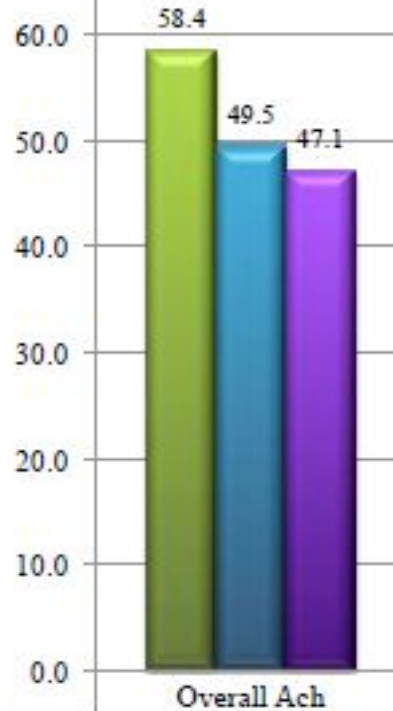
Plan for Closing the  
Achievement Gap

### Achievement

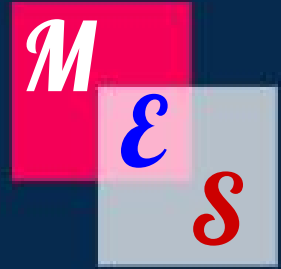


	Overall Ach	Reading	Math	Social Studies	Writing	Language Mechanics
2015	58.4	38.9	34.3	57.8	33.0	47.6
2016	49.5	40.6	34.7	37.4	10.1	33.7
2017	47.1	36.5	19.0	48.0	18.6	40.3
2017 State	68.6	54.3	49.1	60.0	45.9	55.6
2017 District	50.9	40.6	26.3	49.3	14.5	42.6

Overall Ach includes bonus points; Subject Scores are % proficient and distinguished

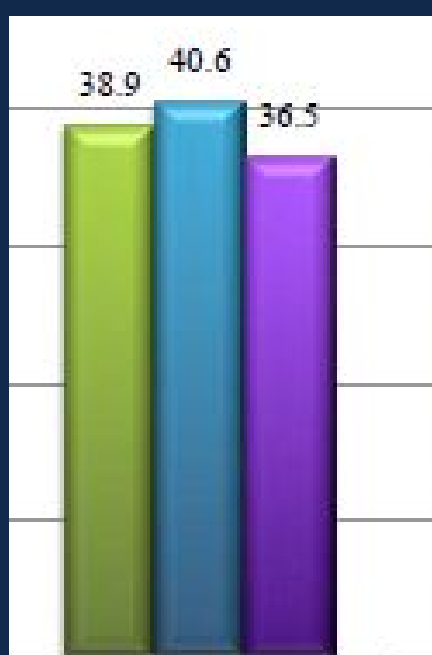
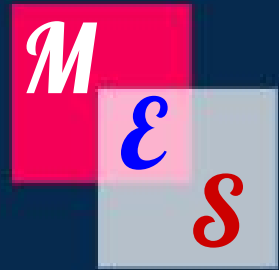


2015	58.4
2016	49.5
2017	47.1
2017 State	68.6
2017 District	50.9



## Observations

- Decrease in overall P/D from 2016 to 2017 of 2.4
- Decrease in overall P/D from 2015 to 2017 of 11.3
- No bonus points received.
- 21.5 pts. Below the state average.
- 3.8 pts. Below the district average.

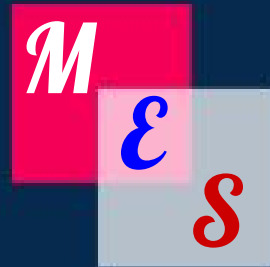


Reading

■ 2015	38.9
■ 2016	40.6
■ 2017	36.5
2017 State	54.3
2017 District	40.6

## Observations

- Decrease from 2016 to 2017 of 4.1% of P/D in Reading.

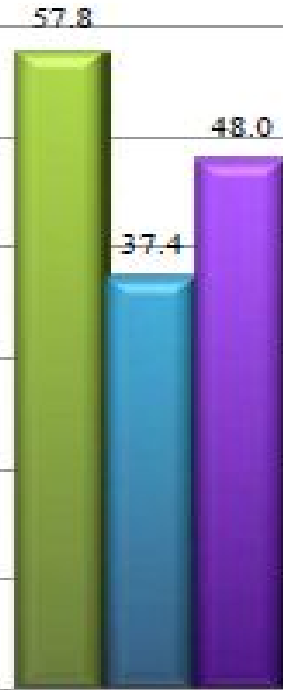
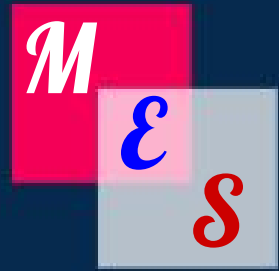


Math

■ 2015	34.3
■ 2016	34.7
■ 2017	19.0
2017 State	49.1
2017 District	26.3

## Observations

- Decrease from 2016 to 2017 of 15.7% of P/D in Math.

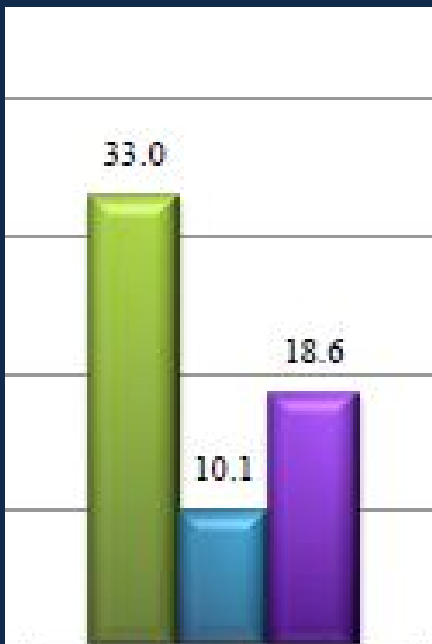
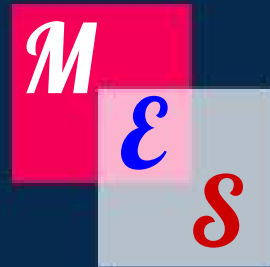


	Social Studies
2015	57.8
2016	37.4
2017	48.0
2017 State	60.0
2017 District	49.3

2015
2016
2017
2017 State
2017 District

## Observations

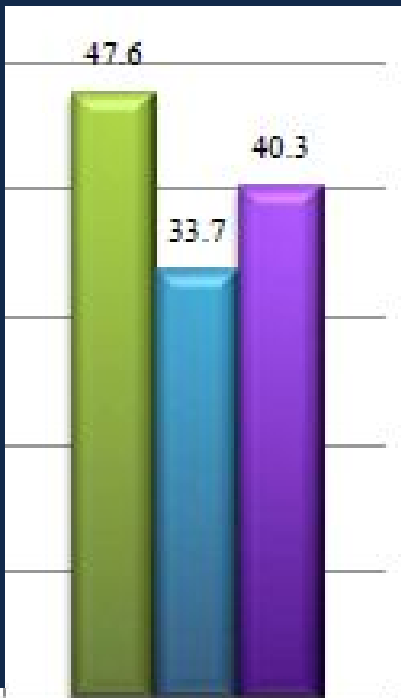
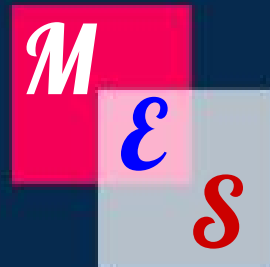
- Increase from 2016 to 2017 of 10.6% of P/D in Social Studies.



	Writing
2015	33.0
2016	10.1
2017	18.6
2017 State	45.9
2017 District	14.5

## Observations

- Increase from 2016 to 2017 of 8.5% of P/D in Writing.



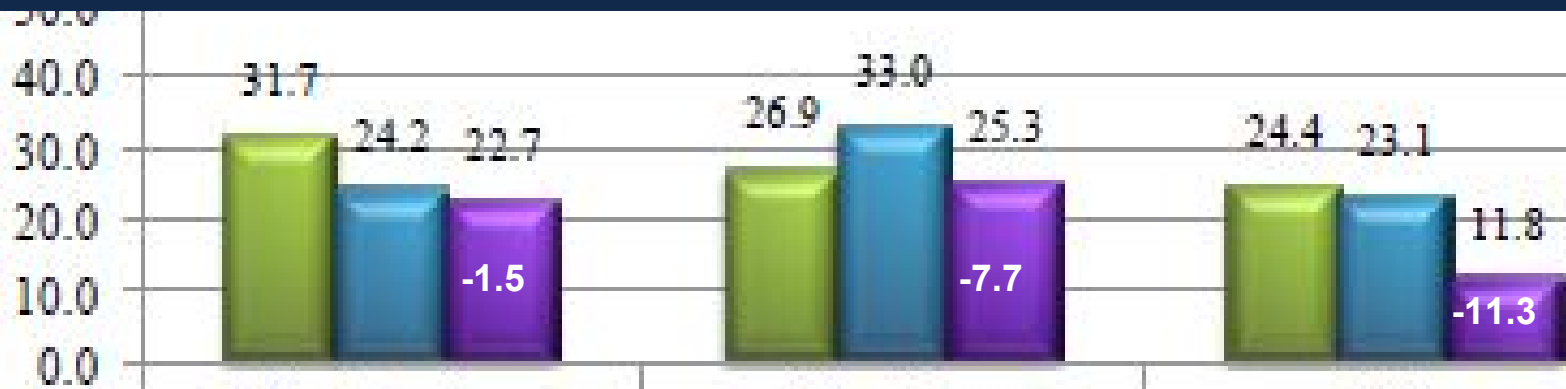
	Language Mechanics
■ 2015	
■ 2016	47.6
■ 2017	33.7
2017 State	40.3
2017 District	55.6

## Observations

- Increase from 2016 to 2017 of 6.6% of P/D in Language Mechanics.

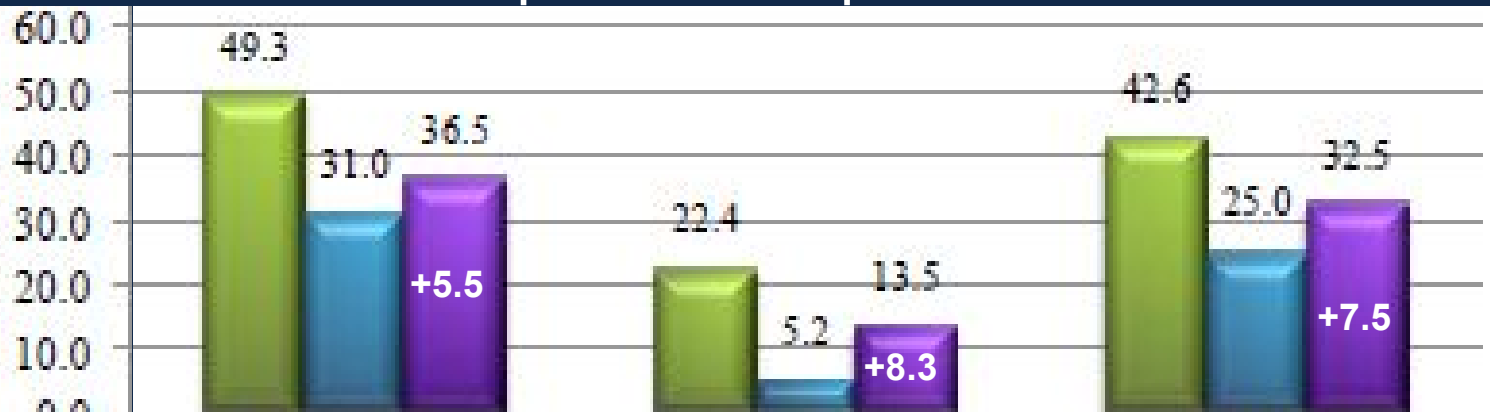


# Non-Duplicated Gap %

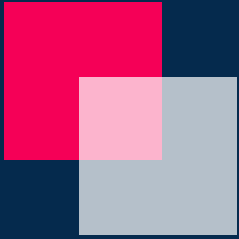


	Non-Dup Score	Reading	Math
2015	31.7	26.9	24.4
2016	24.2	33.0	23.1
2017	22.7	25.3	11.8
2017 State	44.0	45.4	40.2
2017 District	26.1	31.6	18.0

# Non-Duplicated Gap %

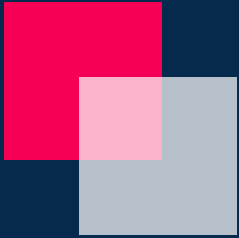


	Social Studies	Writing	Language Mechanics
■ 2015	49.3	22.4	42.6
■ 2016	31.0	5.2	25.0
■ 2017	36.5	13.5	32.5
2017 State	50.4	37.8	46.4
2017 District	39.4	10.6	34.4



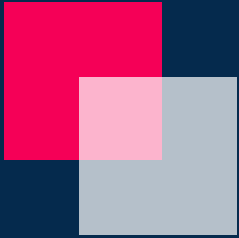
# Plan for Closing the Achievement Gap

- Data Retreat and DR Plan
- Writing with Abell & Atherton
- Academic & Behavior RTI with ABRI



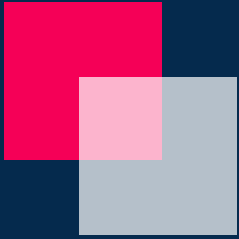
# Data Retreat and DR Plan

- 3 days of intense data disaggregation
  - KPREP
  - MAP
  - Attendance
  - Behavior
  - RTI
  - Time factor

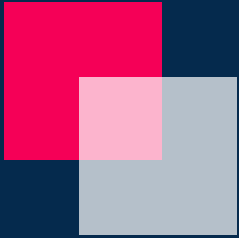


# Data Retreat

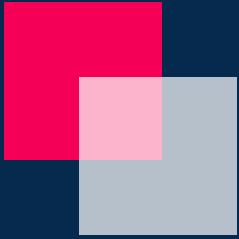
- “The Plan”
  - Align the rigor of reading and math instruction to the standards.
    - Deconstruct the standards
    - Common Understanding
    - PLC Protocol to ensure standards are being taught to mastery
    - Create Common Assessments



- “The Plan” continued...
  - Effective Teaching Strategies
    - High yield strategies - strategies that when used consistently and to fidelity will yield a higher than average growth.
    - Modeling

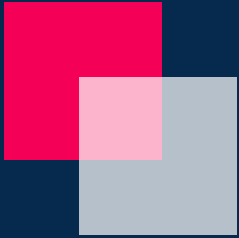


- “The Plan” continued...
  - Reading and Math Professional Development
    - List of available PD for teachers aligned to the needs of individual teachers.
    - Share resources and strategies with faculty

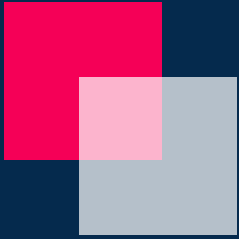


- “The Plan” continued...
  - Time Factor
    - Revisit schedule to ensure appropriate amount of time is spent on reading and math
    - Collect data on transitions
    - Uninterrupted time
    - Time for vertical planning
    - Remove things from teacher’s plates (committees, extra duties, events, etc.)



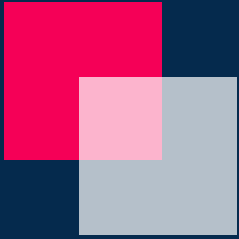


- “The Plan” continued...
  - Opportunities for Co-Teaching for SpEd and ELL
    - Collaborate with teachers to develop an appropriate schedule.



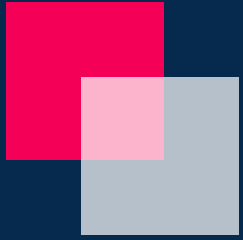
## Writing with Abell & Atherton

- A grade level representative will receive training from Abell & Atherton.
- Participant becomes the writing “guru” for that grade level.
- Implement developed writing plan
- Provide numerous real world opportunities for students to write.



# Academic & Behavior RTI with ABRI

- Academic RTI Procedures
- Behavior RTI Procedures
- ABRI will meet with us regularly, look at data, and make data driven decisions about core instruction as well as interventions.



# Morgantown

# Elementary

Plan for Closing the  
Achievement Gap